

Road markings ARM

Avoid collision damage with the ARM reflective road markings.

Features

- Available as a surface model with or without LED illumination
- Robust housing
- Long life
- Optimum visibility (800 meters with LED lights)

ARM road markings

Application

In order to prevent damage resulting from a collision in situations regarding docking circumstances during the evening or night, reflecting road markings provide excellent assistance.

The ARM reflective road markings are also available with LED lights for optimum visibility (up to 800 m).

This model is equipped with a solar cell that charges an internal battery. This version is completely waterproof.



ATTENTION!

The built-on road markings have been designed as such that they can withstand (incidental) lorry wheel loads.

Options

For the road marks, type ARM-0030, ARM-0040 and ARM-0045, a mounting kit is available as an option.

Reflective road markings

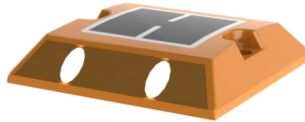
The reflective road marking is made of impact resistant plastic and can withstand up to 16 tons of pressure force.



The road marking is provided with two reflectors.

Solar road marking 2 LEDs

The LED road marking is equipped with reflectors and LED lighting for optimal visibility (up to 800 m).



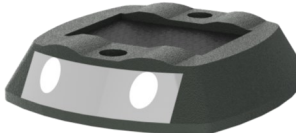
An integrated solar panel charges an internal battery that provides power to the LED lamps.

The LED lights are flashing or continuous.

The housing is made of Polycarbonate and can withstand up to 20 tons of pressure force. The housing is waterproof (IP > 67)

Solar road marking 4 LEDs

The LED road marking is equipped with reflectors and LED lighting for optimal visibility (up to 800 m).



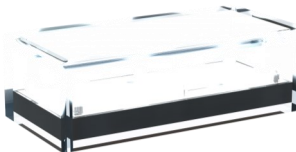
An integrated solar panel charges an internal battery that provides power to the LED lamps.

The LED lights are flashing or continuous.

The housing is made of an aluminium alloy and can withstand up to 30 tons of pressure force. The housing is waterproof (IP > 67)

Solar Ice Brick road light

The Ice Brick road light is designed as a paving stone and equipped with 6 LEDs for optimal visibility (up to 800 m).



An integrated solar panel charges an internal battery that provides power to the LED lamps.

The LED lights are continuous.

The housing is made of glass and can withstand up to 12 tons of pressure force. The housing is waterproof (IP > 68)

Article nr.	Dimension (mm)	Weight (kg)	Colour
ARM-0030	102x102x22	0,18	yellow

Technical specifications ARM-0040

Solar panel.....3 VDC, 75 mA
 Battery.....Ni-MH (700 mAh)
 Number of LED lamps.....2 pieces
 Visibility.....>800 m
 Operation time.....±108 hours (flashing) / ±24 hours (continuous)
 Work temperature.....-25 up to +75 °C
 Material housing.....Polycarbonate
 Maximum pressure force.....20 tons
 Life time.....>5 years
 Protection class.....>IP67

Article nr.	Dimension (mm)	Weight (kg)	Colour
ARM-0040	102x102x22	0,19	orange

Technical specifications ARM-0045

Solar panel.....3 VDC, 75 mA
 Battery.....Ni-MH (1200 mAh)
 Number of LED lamps.....4 pieces
 Visibility.....>800 m
 Operation time.....±108 hours (flashing) / ±24 hours (continuous)
 Work temperature.....-25 up to +75 °C
 Material housing.....Aluminium alloy
 Maximum pressure force.....30 tons
 Life time.....>5 years
 Protection class.....>IP67

Article nr.	Dimension (mm)	Weight (kg)	Colour
ARM-0045	140x130x28	0,67	Steel grey

Technical specifications ARM-0050

Solar panel.....2 VDC, 100 mA
 Battery.....Ni-MH (700 mAh)
 Number of LED lamps.....6 pieces
 Visibility.....>800 m
 Operation time.....±24 hours (continuous)
 Work temperature.....-25 up to +75 °C
 Material housing.....Glass
 Maximum pressure force.....12 tons
 Life time.....>5 years
 Protection class.....>IP68

Article nr.	Dimension (mm)	Weight (kg)	Colour
ARM-0050	195x95x60	1,4	transparant