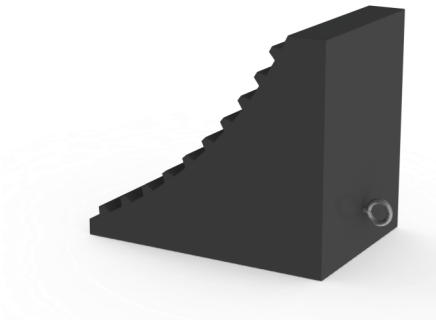
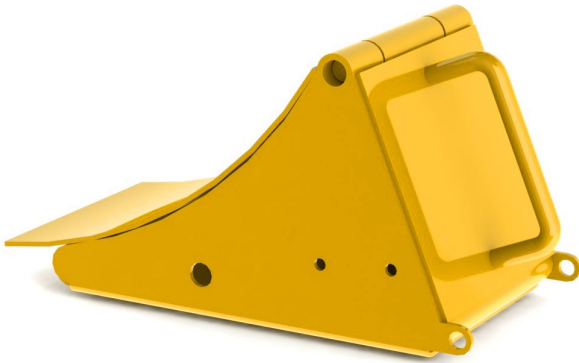


AWC wheel chock



Wheel chocks AWC

Increase safety during loading and unloading with the AWC wheel chocks.

Features

- Can be used for any type of vehicle
- Circuit with dock equipment, industrial doors and / or traffic lights optional possible
- Easy installation
- Available in 4 different models

AWC wheel chock

Application

By placing a wheel chock in front of the truck wheel, the safety during loading and unloading is increased. The purchase of a wheel chock is an economically attractive solution.

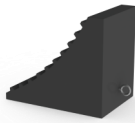
The wheel chocks AWC-S (standard) and AWC-D (optional) can be connected to the control box of the dock leveller, industrial door and / or traffic lights (outside) and signal lights (inside).

When the wheel chock is placed, the dock leveler is released for use, the industry door opened and / or turn the lights (outside) to red and the signal light (indoor) to green.

At the moment that the wheel chock is removed, turns the traffic light (outside) to green light and the signal light (indoor) to red to indicate that an unsafe loading and unloading situation is created.

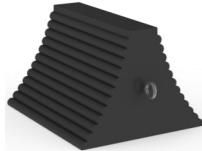
AWC-R

Made of durable "long life" rubber and is provided with an eye bolt.



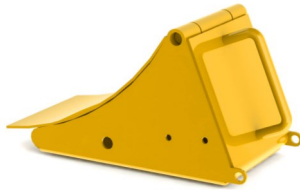
AWC-RS

The AWC-RS model is symmetrical and also provided with an eye bolt.



AWC-S

The AWC-S wheel chock is extremely durable and comes with a sensor to detect the truck wheel of the vehicle after placement of the wheel chock.



AWC-D

The double wheel chock is robust, innovative and user friendly. The truck wheels are locked on both sides.

This wheel chock can be optionally equipped with an optical sensor for the vehicle to detect.



Article nr.	Width (mm)	Height (mm)	Length (mm)	Weight (kg)
AWC-R	160	205	235	5
AWC-RS	230	150	200	3.5

Technical specifications AWC-R / AWC-RS

Standard colour.....black

Options

- Galvanized anti-theft chain (4 m) with mounting bracket
- Wall bracket

Article nr.	Width (mm)	Height (mm)	Length (mm)	Weight (kg)
AWC-S	210	225	440 (*)	17

(*) including handle

Technical specifications AWC-S

Power supply.....24 V/DC
Spiral cable.....up to 8 meter extendable
Connections.....switch box for wall mounting
Standard colour.....RAL 1023
Protection class.....IP65

Options

- Galvanized anti-theft chain (5 m) with mounting bracket
- Positioning rod with wheels and stop sign to increase ease of use and safety
- Galvanised finish

Article nr.	Width (mm)	Height (mm)	Length (mm)	Weight (kg)
AWC-D	735	900	1150	50

Technical specifications AWC-D

Standard colour.....RAL 1023
Galvanized anti-theft chain.....5 meter with mounting bracket

Options

- Optical sensor, up to 8 meter extendable spiral cable and switch box
- Galvanised finish